

# MONTHLY MEMBERSHIP PROGRESS REPORT

LOCATION NEW YORK

District 20 E2

Results as of: 3/31/2023

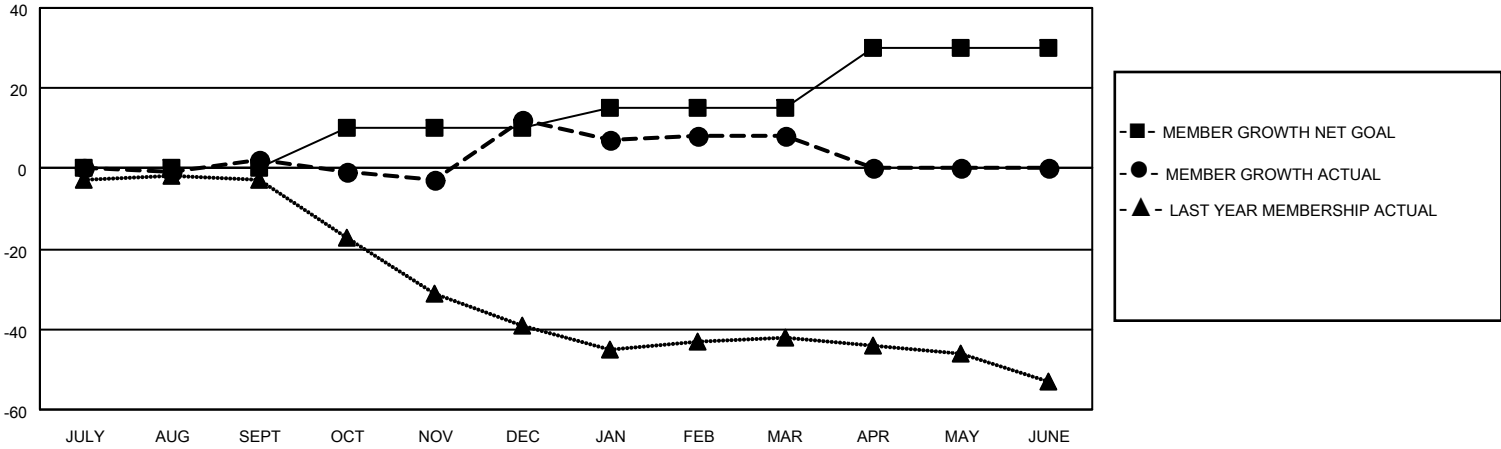
Clubs			
RESULTS FOR 2022-2023			
QUARTER	NEW CLUB GOAL	NEW CLUBS	DROPPED CLUBS
JULY/AUG/SEPT	0	0	0
OCT/NOV/DEC	0	0	0
JAN/FEB/MAR	1	0	0
APR/MAY/JUNE	0	0	0

Members			
RESULTS FOR 2022-2023			
QUARTER	MEMBER GROWTH NET GOAL	MEMBER GROWTH ACTUAL	DROPPED MEMBERS ACTUAL (including transfers)
JULY/AUG/SEPT	0	9	6
OCT/NOV/DEC	10	31	20
JAN/FEB/MAR	5	9	12
APR/MAY/JUNE	15	0	0

**GOALS AND ACTUAL NEW CLUBS CUMULATIVE**



**GOALS AND ACTUAL MEMBERS CUMULATIVE**



DROPPED CLUBS: 0	
<u>DROPPED MEMBERS</u>	
DECEASED	11
CLUB CANCELLED	0
OTHER	27
<b>TOTAL</b>	<b>38</b>

14 CLUBS OF 35 ADDED 1 OR MORE NEW MEMBERS

[CLICK HERE FOR CUMULATIVE MEMBERSHIP DATA](#)

<u>GENDER DISTRIBUTION</u>	
MALE	513 (61.14%)
FEMALE	326 (38.86%)
NON BINARY	0 (0.00%)
PREFER NOT TO ANSWER	0 (0.00%)
<b>TOTAL FAMILY UNIT MEMBERS</b>	<b>170</b>
<b>FAMILY MEMBERS PAYING HALF DUES</b>	<b>86</b>